



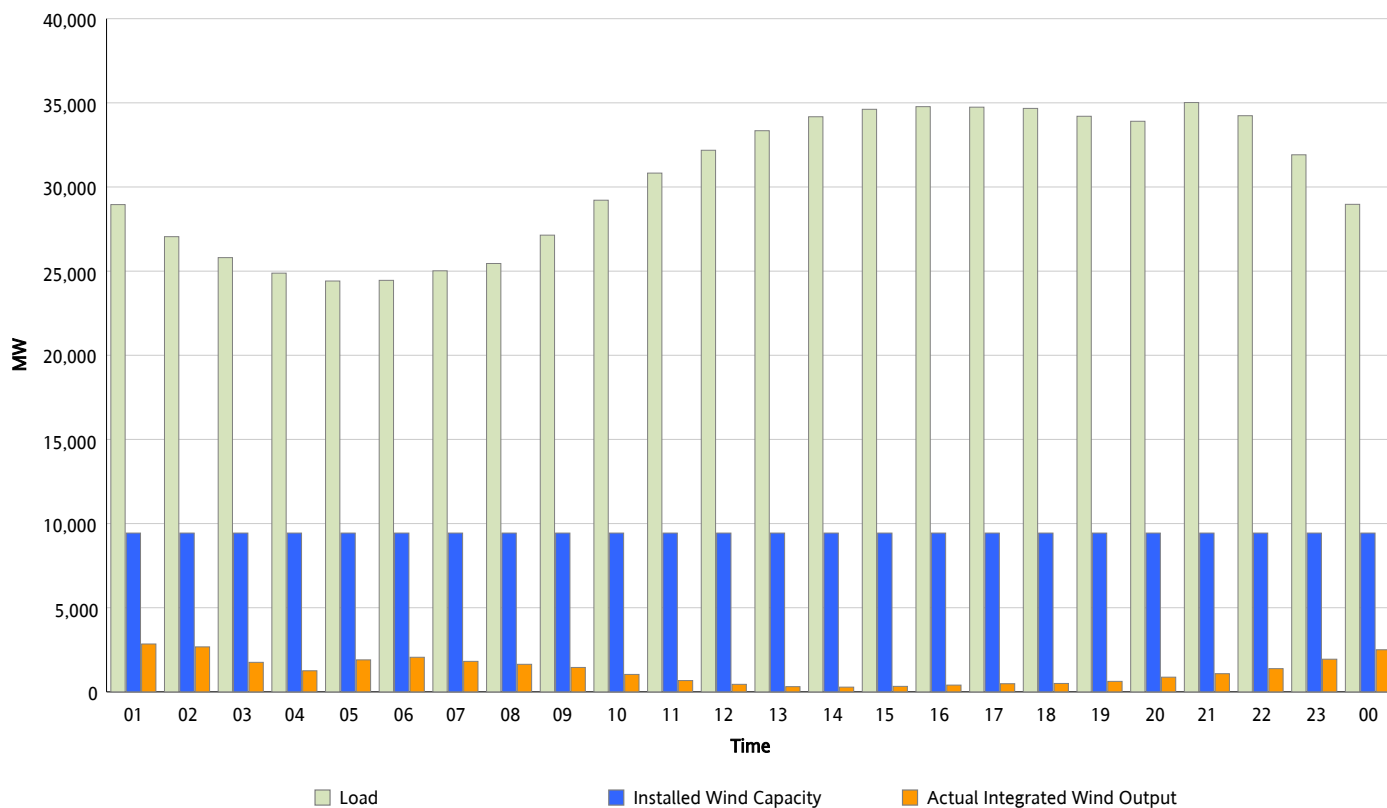
ERCOT Grid Operations

Wind Integration Report : 04/08/2012

Peak Load	35,019 MW
Load Peak Hour (HE)	21
Wind Over Peak	1,081 MW
Wind Record 03/18/12	7,917 MW
Max Wind Value*	3,037 MW
Wind Peak Time	01:02
Wind Integration %	10.91 %

Hourly Average Actual Load vs. Actual Wind Output

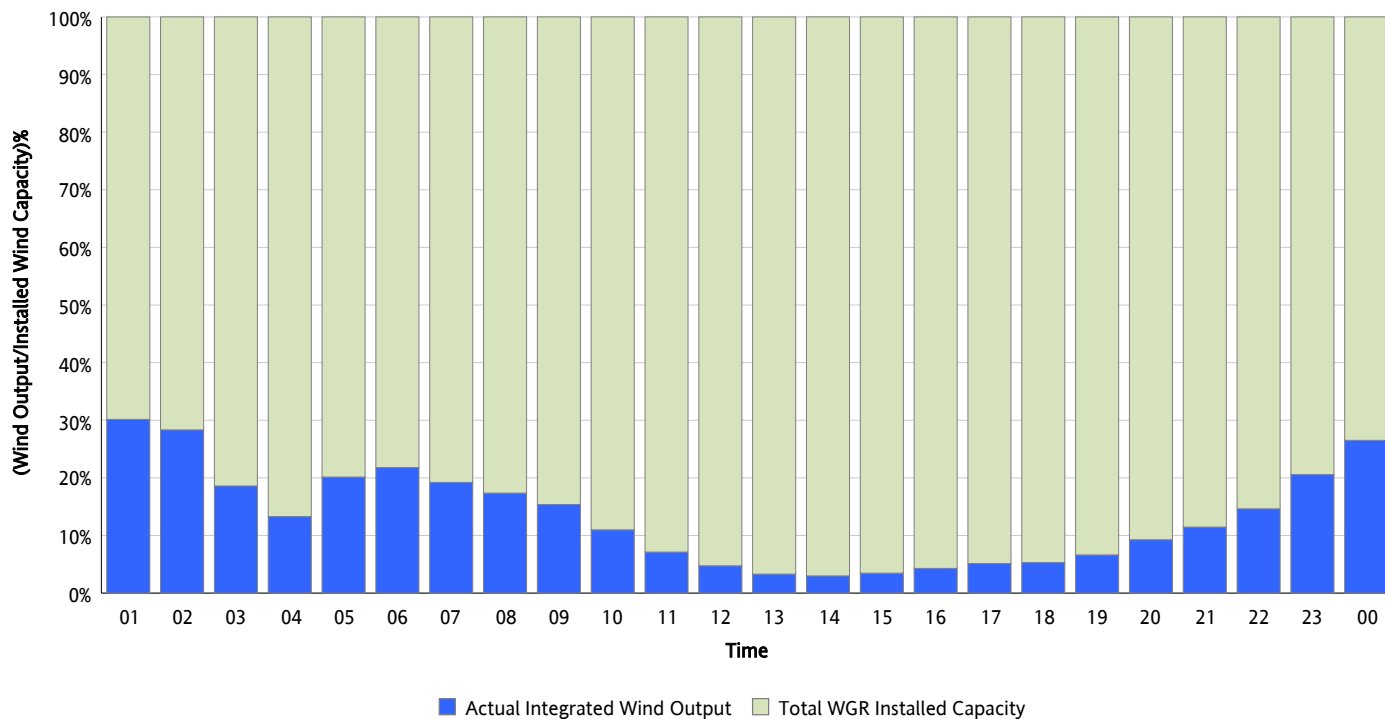
04/08/2012



* Wind Record and Wind Max represent instantaneous values and the rest of the values are integrated over the hour

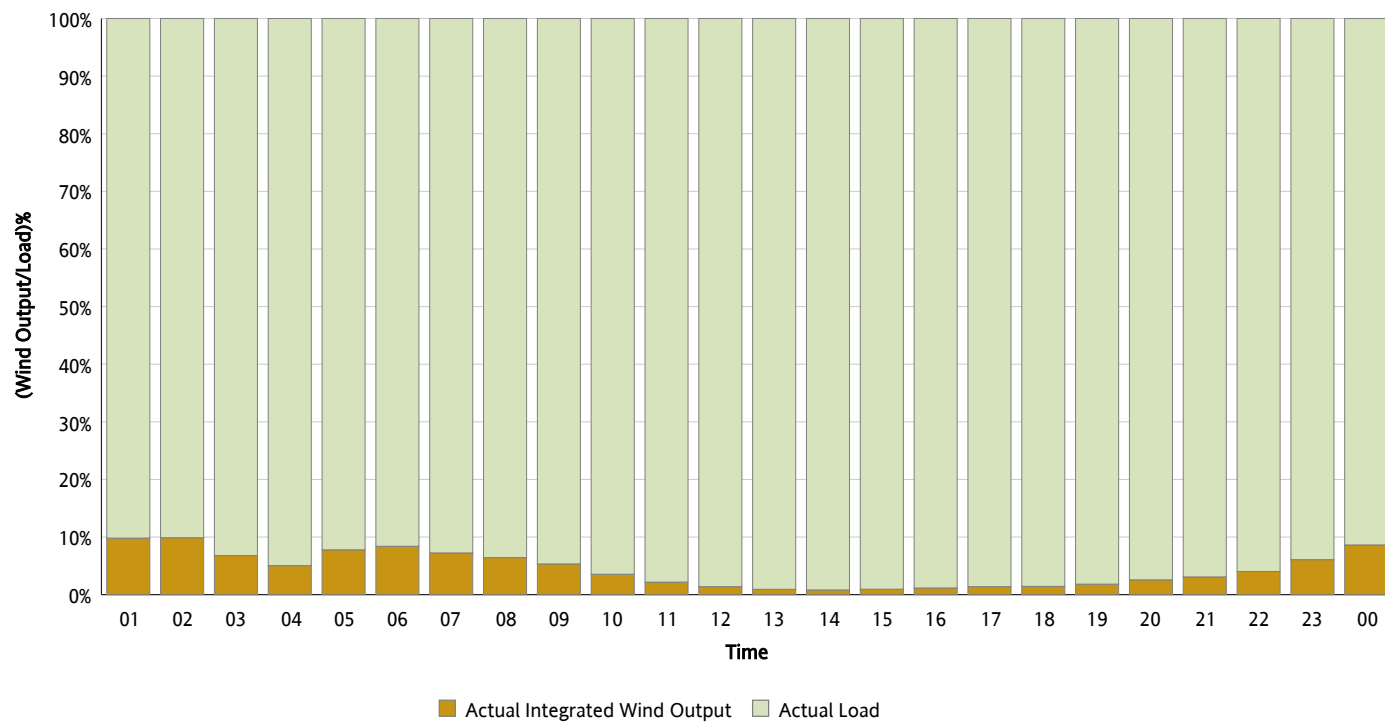
Actual Wind Output as a Percentage of the Total Installed Wind Capacity

04/08/2012



Actual Wind Output as a Percentage of the ERCOT Load

04/08/2012



ERCOT Load vs. Actual Wind Output

04/01/2012 - 04/08/2012

